
L1-32

EN 14439:2009 - C25
Technical Data

LIEBHERR

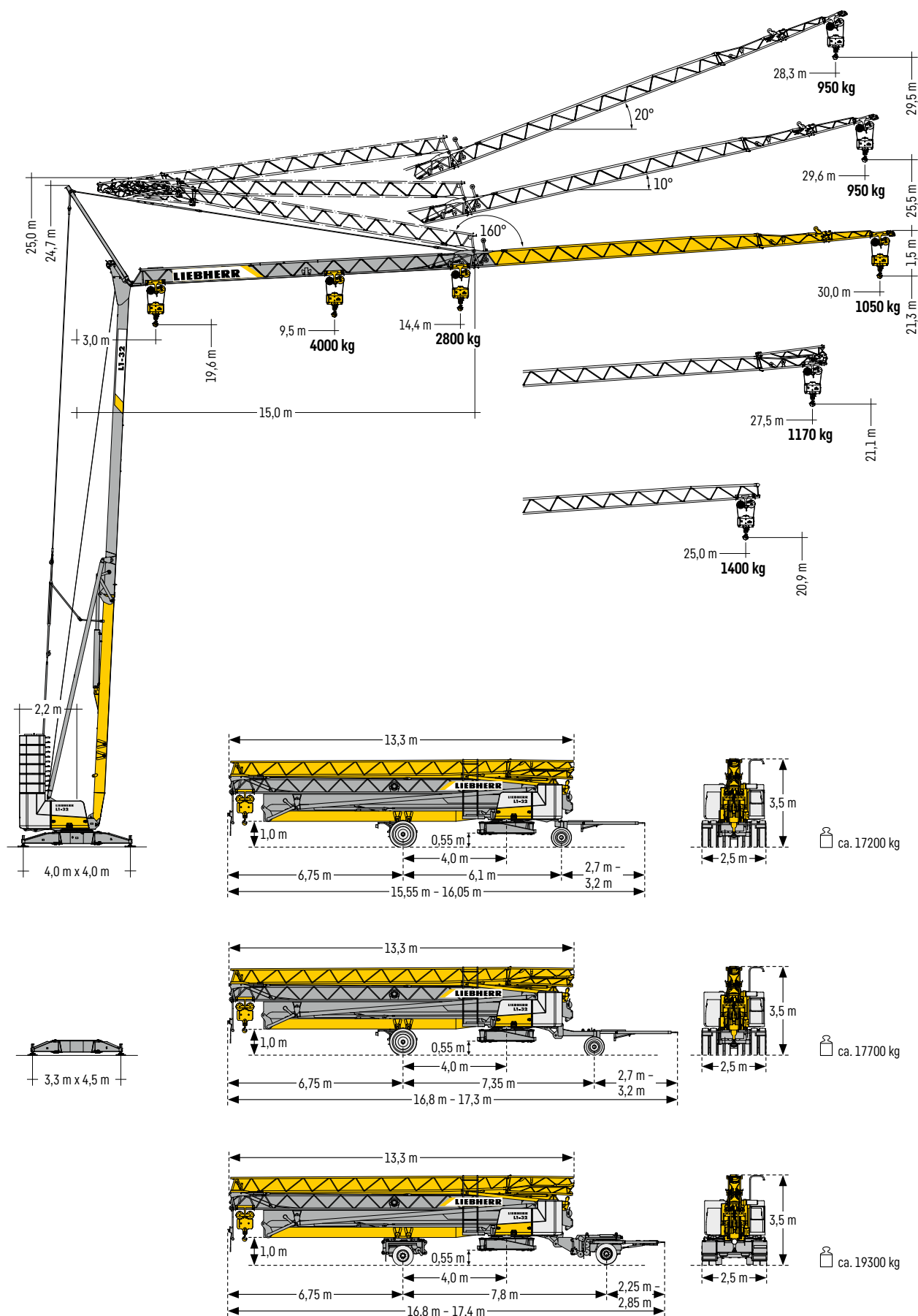
Tower Cranes

CE | UK
CA

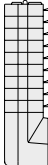
L1-32

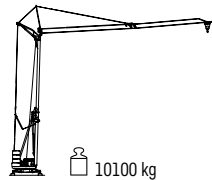
Kranbetrieb und Transport · Crane operation and transport Exploitation de la grue et transport · Funzionamento della gru e trasporto Accionamiento de grúa y transporte · Operação e transporte de guindastes Эксплуатация крана и транспортировка	04
Gewichte · Weights · Poids · Pesi · Pesos · Pesos · Macca.....	05
Ausladung und Tragfähigkeit · Radius and capacity · Portée et charge Sbraccio e portata · Alcances y cargas · Alcance e capacidade de carga Вылет и грузоподъемность.....	05
Antriebe · Driving units · Mécanismes d'entraînement · Meccanismi Mecanismos · Mecanismos · Приводы	06
Aufstellvorgang · Erection procedure · Déroulement de montage Procedimento di montaggio · Procedimiento de montaje · Sistema de montagem Процесс развертывания	06
Kolli-Liste · Packing List · Liste de colisage · Lista dei colli · Lista de contenido Lista de embalagem · Упаковочный лист	07

Kranbetrieb und Transport · Crane operation and transport · Exploitation de la grue et transport · Funzionamento della gru e trasporto · Accionamiento de grúa y transporte · Operação e transporte de guindastes · Эксплуатация крана и транспортировка



Gewichte · Weights · Poids · Pesì · Pesos · Pesos · Macca


	r = 2,2 m
	17000 kg ¹⁾
	19000 kg ¹⁾
	15000 kg ¹⁾



Ausladung und Tragfähigkeit · Radius and capacity · Portée et charge · Sbraccio e portata Alcances y cargas · Alcance e capacidade de carga · Вылет и грузоподъемность

Auslegerstellung 0° · Jib position 0° · Position de flèche 0° · Posizione del braccio 0°


Posición de la pluma 0° · Posição da lança 0° · Положение стрелы 0°

m		m	kg	m																										
				10,0	11,0	12,0	13,0	14,0	14,4	15,0	16,0	17,0	18,0	19,0	20,0	21,0	22,0	23,0	24,0	25,0	26,0	27,0	27,5	28,0	29,0	30,0				
30,0		3,0 - 9,5	4000	3750	3350	3030	2770	2540	2470	2350	2180	2030	1910	1790	1690	1600	1510	1440	1370	1300	1240	1190	1160	1140	1090	1050				
27,5		3,0 - 9,5	4000	3770	3370	3050	2780	2560	2480	2360	2190	2050	1920	1800	1700	1600	1520	1440	1370	1310	1250	1200	1170							
25,0		3,0 - 10,0	4000	4000	3600	3250	2970	2730	2650	2520	2340	2180	2040	1920	1810	1710	1620	1540	1470	1400										
14,4		3,0 - 10,6	4000	4000	3840	3460	3150	2880	2800																					

Auslegerstellung 0° · Jib position 0° · Position de flèche 0° · Posizione del braccio 0°


Posición de la pluma 0° · Posição da lança 0° · Положение стрелы 0°



m		m	kg	m																										
				8,0	9,0	10,0	11,0	12,0	13,0	14,0	14,4	15,0	16,0	17,0	18,0	19,0	20,0	21,0	22,0	23,0	24,0	25,0	26,0	27,0	27,5	28,0	29,0	30,0		
30,0		3,0 - 8,7	4000	4000	3860	3460	3130	2860	2630	2430	2370	2260	2110	1970	1860	1750	1650	1570	1490	1420	1350	1290	1240	1180	1160	1140	1090	1050		
27,5		3,0 - 8,8	4000	4000	3910	3500	3170	2890	2660	2450	2390	2280	2130	1990	1870	1770	1670	1580	1500	1430	1360	1300	1250	1200	1170					
25,0		3,0 - 9,5	4000	4000	3790	3420	3120	2860	2640	2570	2450	2290	2140	2010	1900	1790	1700	1620	1540	1470	1400									
14,4		3,0 - 10,5	4000	4000	4000	3790	3430	3130	2880	2800																				


Auslegerstellung 10° · Jib position 10° · Position de flèche 10° · Posizione del braccio 10°

Posición de la pluma 10° · Posição da lança 10° · Положение стрелы 10°

m		m	kg	m																											
				10,0	11,0	12,0	13,0	14,0	14,2	15,0	16,0	17,0	18,0	19,0	20,0	21,0	22,0	23,0	24,0	24,7	25,0	26,0	27,0	27,1	28,0	29,0	29,6				
30,0		3,0 - 16,6	2000	2000										1930	1800	1680	1570	1470	1390	1310	1240	1200	1180	1120	1070	1060	1020	970	950		
27,5		3,0 - 16,7	2000	2000										1950	1810	1690	1580	1480	1400	1320	1250	1210	1190	1130	1080	1070					
25,0		3,0 - 17,7	2000	2000										1950	1820	1700	1600	1510	1420	1350	1300										
14,4		3,0 - 14,2	2000	2000																											

Auslegerstellung 20° · Jib position 20° · Position de flèche 20° · Posizione del braccio 20°

Posición de la pluma 20° · Posição da lança 20° · Положение стрелы 20°

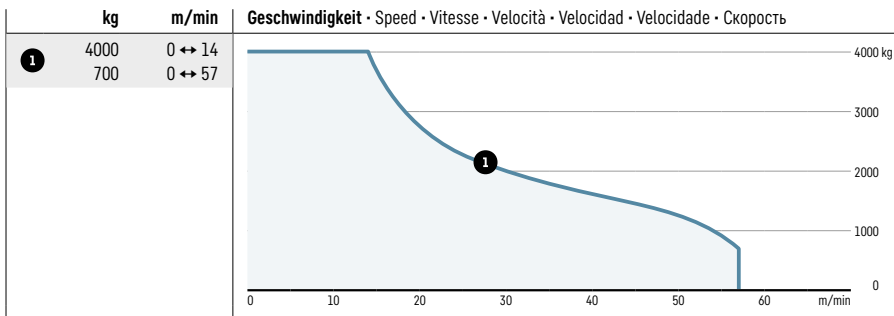
m		m	kg	m																										
				10,0	11,0	12,0	13,0	13,6	14,0	15,0	16,0	17,0	18,0	19,0	20,0	21,0	22,0	23,0	23,6	24,0	25,0	26,0	27,0	28,0	28,3					
30,0		3,0 - 28,3	950	950																										
27,5		3,0 - 26,0	950	950																										
25,0		3,0 - 23,6	950	950																										
14,4		3,0 - 13,6	950	950																										

¹⁾ Siehe Betriebsanleitung. · See instruction manual. · Voir manuel de service. · Vedi manuale d'istruzione. · Ver manual de instrucción.
Ver manual de instruções. · См. инструкцию по эксплуатации.

Antriebe · Driving units · Mécanismes d'entraînement · Meccanismi
 Mecanismos · Mecanismos · Приводы

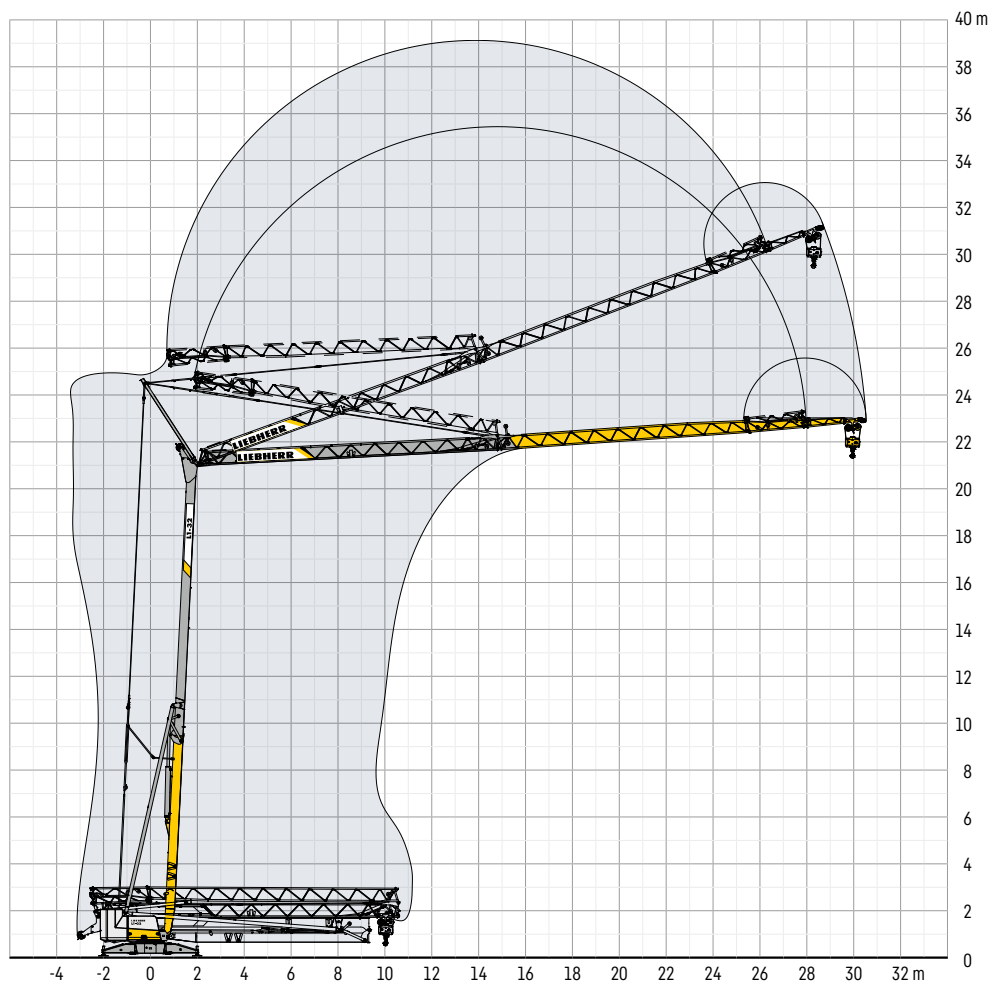
3 ↑ 11 kW FU

↔ **stufenlos**
 stepless
 régl. continu
 regl. progressiva
 sin escalones
 sem degraus
 бесступенчатый



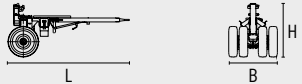
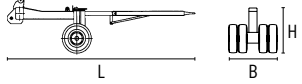
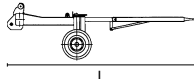

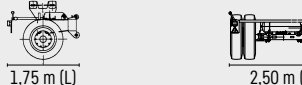
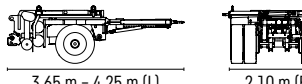
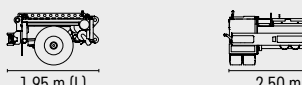



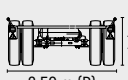

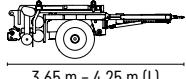
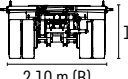

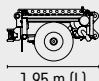
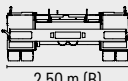

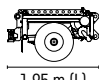
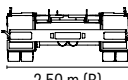

400 - 440 V	0 ↔ 0,8 U/min · sl./min · tr./min 2,2 kW FU	0 ↔ 54 m/min 2,5 kW FU	2 min/160° 2,2 kW	50 - 60 Hz	15,0 kVA	BGL C.0.02.0031
-------------	--	---------------------------	----------------------	------------	----------	---------------------------

Aufstellvorgang · Erection procedure · Déroulement de montage · Procedimento di montaggio
 Procedimiento de montaje · Sistema de montagem · Процесс развертывания



Kolli-Liste · Packing List · Liste de colisage · Lista dei colli · Lista de contenido

Lista de embalagem · Упаковочный лист

P ₁	A ₁	Beschreibung · Description · Description · Descrizione · Descripción · Descrição · Описание							
1	1	Transportachse vorne L1-Adapter · Road transport axle front Essieux de transport avant · Asse di trasporto anteriore Eje delantero para transporte · Eixo de transporte dianteiro Транспортировочная ось, передняя			L (m)	B (m)	H (m)	kg	
					Tra 100 KY 2	3,09	1,24	1,36	600
					Tra 100 KY 6 Tra 100 KY 6 A	3,09	1,24	1,36	700
2	1	Transportachse vorne, H-Adapter · Road transport axle front, H adapter Essieux de transport avant, pièce d'adapt. H · Assale anteriore, adattatore per H · Eje de transporte delantero, adaptador H · Eixo de transporte dianteiro, adaptador H · Транспортировочная ось, передняя, адаптер			L (m)	B (m)	H (m)	kg	
					Tra 100 KY 2	4,30	1,25	1,31	750
					Tra 100 KY 6 Tra 100 KY 6 A	4,30	1,25	1,31	850
3	1	Transportachse vorne m. Zwischenadapter · Road transport axle front w. adapter · Essieux de transport avant a. pièce d'adapt. · Assale anteriore con adattatore intermedio · Eje de transporte delantero con adaptador intermedio · Eixo de transporte dianteiro com adaptador intermédio · Транспортировочная ось, передняя, с промежуточным адаптером			L (m)	B (m)	H (m)	kg	
					Tra 100 KY 2	4,30	1,25	1,31	950
					Tra 100 KY 6 Tra 100 KY 6 A	4,30	1,25	1,31	1200
4	1	Transportachse hinten, H-Adapter · Road transport axle behind, H adapter Essieux de transport arrière, pièce d'adapt. H · Assale posteriore, adattatore per H · Eje de transporte trasero, adaptador H · Eixo de transporte traseiro, adaptador H · Транспортировочная ось, задняя, адаптер			1,60 m (L)	2,50 m (B)	1,20 m (H)	and · et · e · y · y · и	
								GY 1 A	 1000 kg
5	1	Transportachse hinten m. Zwischenadapter · Road transport axle behind w. adapter · Essieux de transport arrière a. pièce d'adapt. · Assale posteriore con adattatore intermedio · Eje de transporte trasero con adaptador intermedio · Eixo de transporte traseiro com adaptador intermédio · Транспортировочная ось, задняя, с промежуточным адаптером			1,75 m (L)	2,50 m (B)	1,25 m (H)	and · et · e · y · y · и	
								GY 1 A	 1250 kg
6	1	Transportachse vorne LiTRAX HS-121 · Road transport axle front Essieux de transport avant · Asse di trasporto anteriore Eje delantero para transporte · Eixo de transporte dianteiro Транспортировочная ось, передняя			3,65 m - 4,25 m (L)	2,10 m (B)	1,15 m (H)		
								 1900 kg	
7	1	Transportachse hinten LiTRAX HS-122 (ohne Lenkung) · Road transport axle behind (without steering) · Essieux de transport arrière (sans direction) Asse di trasporto posteriore (senza sterzo) · Eje trasero para transporte (sin sistema de dirección) · Eixo de transporte traseiro (sem esterço) · Транспортировочная ось, задняя (без управления)			1,95 m (L)	2,50 m (B)	1,10 m (H)		
								 1600 kg	
8	1	Transportachse hinten LiTRAX HS-123 (mit Lenkung) · Road transport axle behind (with steering) · Essieux de transport arrière (avec direction) Asse di trasporto posteriore (con sterzo) · Eje trasero para transporte (con sistema de dirección) · Eixo de transporte traseiro (com esterço) · Транспортировочная ось, задняя (с управлением)			1,95 m (L)	2,50 m (B)	1,10 m (H)		
								 1700 kg	

Sämtliche Angaben erfolgen ohne Gewähr.

This information is supplied without liability.

Ces renseignements sont sans garantie.

Tutte le indicazioni fornite senza garanzia.

Declinamos toda responsabilidad derivada de la información proporcionada.

Declinamos qualquer responsabilidade quanto à informação fornecida.

Все данные указаны без обязательств.

Änderungen vorbehalten!

Subject to technical modifications!

Sous réserves de modifications !

Con riserva di modifiche!

¡Sujeto a modificaciones sin previo aviso!

Sujeto a modificações!

С правом внесения изменений!